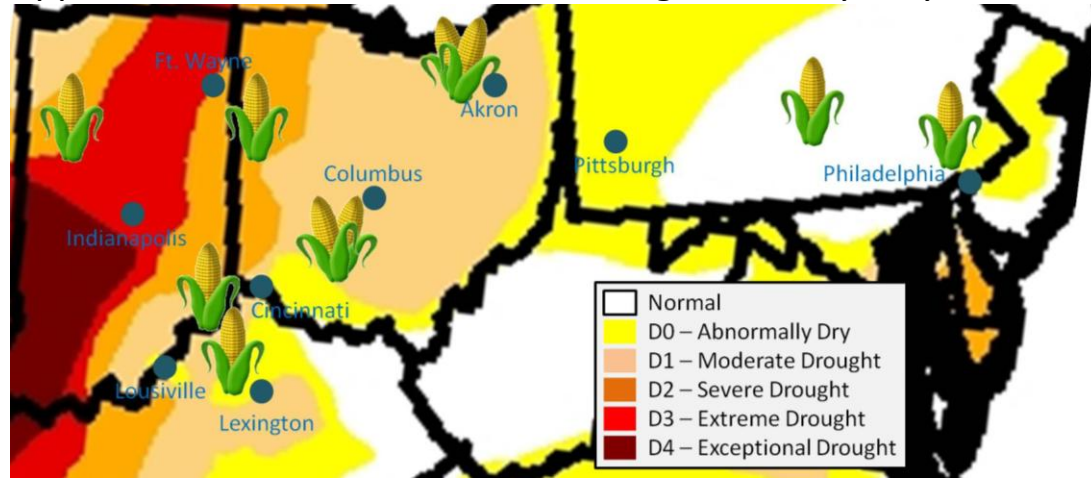


# Mid-East Organic Corn Variety Trial



Approximate farm locations and drought severity, July 31, 2012



In the summer of 2012, Organic Valley and Kentucky State University coordinated organic corn variety trials on ten organic farms across Indiana, Kentucky, Ohio, and Pennsylvania.

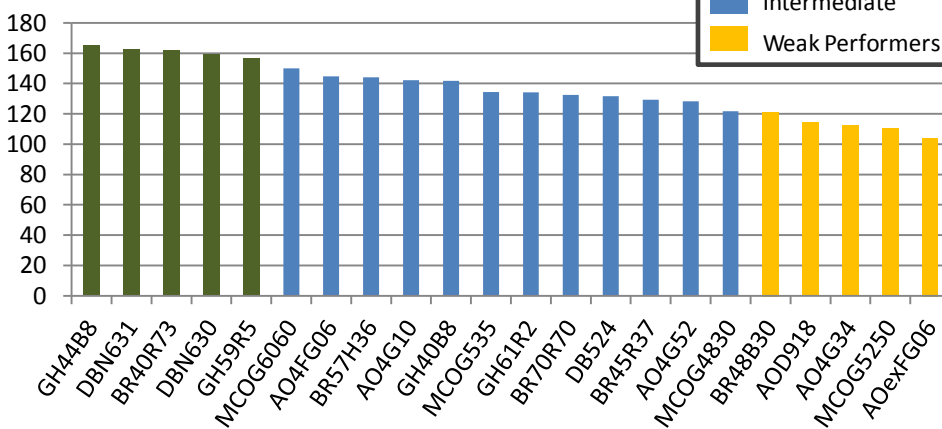
The western part of this region suffered moderate to extreme drought for much of the summer.

Short, medium, and full season varieties donated by five organic seed companies were compared at each location. Each variety was tested on at least four organic farms, using standard production practices employed by experienced farm managers.

## Varieties tested, by supplier and season length

Season Requirement	American Organic (AO)	Blue River Organic Seeds (BR)	Doebler's Pennsylvania Hybrids (DB)	Great Harvest Organics (GH)	Master's Choice (MC)
Short (<95 days)		40R73			OG-4430
Medium (95-105 days)	C919	4G52	45R37	N524	OG-4830
	4G10	4G34	48B30	40B8 44B8	OG-5250
Full (>105 days)	exFG06	D918	57H36	N630	OG-535
	ex11C8VP	4FG06	70R70	N631	OG-6060
	ex11C22VP			59R5 61R2	

## Average yield by variety (bu/ac)



Top performer yields are significantly higher than weak performers (t-test,  $P < 0.05$ ). Intermediate yields do not differ significantly from top or weak performers.

The average yield for the trial was 142 bu/ac, exceeding the national average yield of 122 bu/ac.

Yield varied significantly between locations, ranging from 64 bu/ac in western Indiana to 190 bu/ac in central Ohio.

Differences between varieties were less pronounced than differences between locations.

Top performing varieties were:

- Short season: Blue River Organic Seeds 40R73
- Medium season: Great Harvest Organics 44B8
- Full Season: Doebler's PA Hybrids N630 & N631; Great Harvest Organics 59R5



Prepared by Michael Bomford, Kentucky State University College of Agriculture, Food Science and Sustainable Systems. Thanks to all seed suppliers; Jake Schmitz, Kevin Kiehnau, and Lowell Rheinheimer (Organic Valley); Tony Silvernail, Jon Cambron and Joni Nelson (KSU); Lori Hoagland (Purdue Univ.); Peter Thomison (Ohio State Univ.); Doug Billman, Charles Eselgroth, Dan Fullencamp, Roger Garland, Lloyd Martin, and Dave Osterloh, (Farmer Cooperators). Study will be repeated in 2013. To participate contact Jake Schmitz (270-779-1526 or jake.schmitz@organicvalley.coop).